



## Automated Prepress Workflow for Harlequin RIPs

Demands for prepress and RIP automation are on the rise. Deadlines are compressing as shops transition to an all-digital workflow eliminating much of the labor-intensive manual work of the past, but also the cushion of time built into a job. Xitron's XiFlow, an automated workflow solution for Navigator and other Harlequin RIPs, helps you meet these demands while bringing control to your prepress department. A modular workflow solution that grows as your needs change, XiFlow provides the tools you need to manage your prepress workflow.

### Features and Benefits:

- Design custom workflows**  
 Combine workflow steps to create a custom workflow for a specific job or client
- View Job Status**  
 View the status of all jobs in the system
- Re-output a job from the client**  
 No need for an operator to leave their workstation to re-output a job
- Softproof**  
 Prepress operators can proof at their workstations
- Multiple RIP and Client Support**  
 Support up to three RIPs and ten simultaneous prepress operators. Reduce or eliminate time wasted by operators waiting for the RIP to become available while away from their workstations
- Modular capacity and feature options**  
 Purchase the capacity and features needed today, add features and capacity to meet business needs as required

### User Interface

Using a graphical user interface, operators define workflows based on various steps needed to complete a specific job including basic job management, preflighting and output for both proofing and film or plate. Client software for both PCs and Macs allow prepress operators to manage jobs without leaving their workstation.

### Workflows

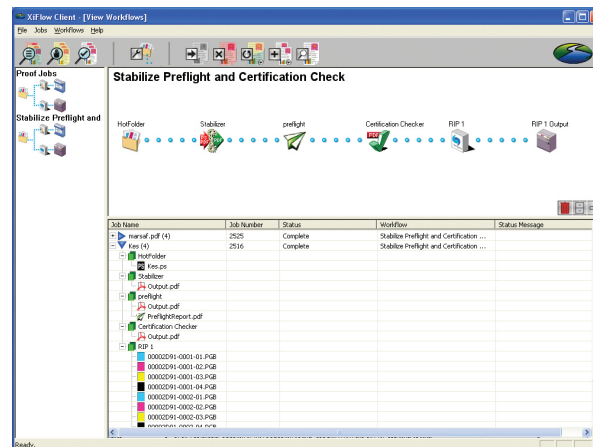
A simple workflow might be used to create a soft and hard copy proof and place the job on hold. After client approval the job is released from XiFlow for final output on the imagesetter or platesetter. Additional workflow steps may also be included by simply creating the steps and connecting them together. Customized workflows may be created for large or recurring jobs, helping to eliminate common errors that may otherwise occur when different operators work on the same job.

### Viewer

An integrated Viewer program in the Client provides a softproof without the need for an operator to leave their workstation. The viewer offers multiple zoom settings, and also allows an operator to view traps and screening prior to final output.

### Job Status and Job Management

The XiFlow Client also provides the operator a complete view of all jobs in the system along with their status. Jobs lists are viewable by workflow step or status



XiFlow Client Window

such as those "on hold."

From the Client, the operator may also resend, redirect and cancel jobs from their workstation.

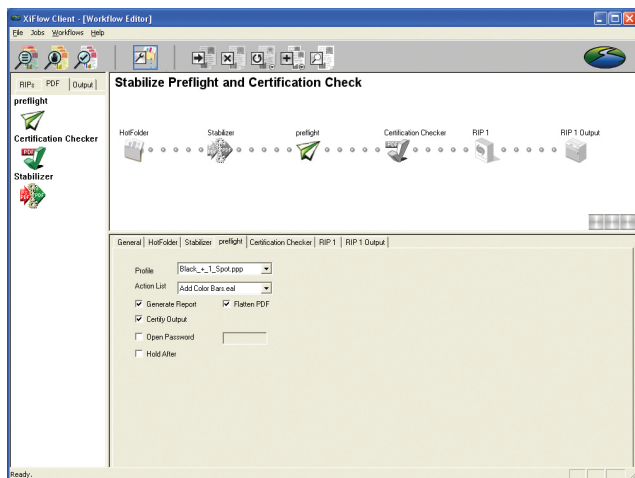
Eliminating the need for an operator to go to the RIP can greatly enhance productivity. XiFlow



retains the original digital file, PostScript or PDF, so that the job can be sent through various steps at different times without the worry of “did I image the version the client approved?” Using the original digital file, there is no need to return to the original application to print another proof or even re-image a section for final output.

## PDF Stabilizer

The PDF Stabilizer converts incoming PostScript and PDF files to a PDF format optimized for prepress workflow and output. Stabilized PDFs will also RIP faster when it is time to render the job for final output.



XiFlow Workflow Editor Window

## Automated Preflight and PDF Edits

The Preflight Checker allows users to automatically preflight jobs in XiFlow using state-of-the-art libraries licensed from Enfocus. Users can view a report outlining the errors and warnings in the job. Hyperlinks in the report open the PDF file and display the page where the problem occurs. Many problems can be fixed in Acrobat using the Enfocus PitStop tools without having to open the file again in the native application. Enfocus Actions Lists automate fixes for the most common problems.



**Corporate Headquarters**  
781 Avis Drive, Suite 200  
Ann Arbor, Michigan 48108  
+1-734-913-8080  
+1-734-913-8088 (fax)  
email: xitronsales@xitron.com  
web: www.xitron.com

***Xitron also has offices in Europe and Asia with distributors worldwide.***  
*Contact Xitron for more information.*

\* Some features may require the RIP to be Navigator version 6.4.

Xitron is a registered trademark of Xitron, Inc. Harlequin is a registered trademark of Global Graphics Software. Macintosh is a registered trademark of the Apple Computer Inc. All other brand or product names are trademarks of their respective owners and are used without intention of infringement.

NAV-LO24-000 (4/04)

## Certified PDF

You can automate the use of PDF files one step further by using Certified PDFs. Supply your customers with Enfocus Certified PDF profiles using the proper settings to output jobs in your shop. Your customer uses the profile when creating PDFs for production. XiFlow checks the incoming file to see if the job is indeed a Certified PDF. If it passes the file goes through, if there's a problem the Preflight Checker finds it.

## JDF Enabler

The JDF Enabler allows XiFlow to interpret JDF commands and pass the information on to the RIP. Incoming JDF files will have instructions on how to output the file. XiFlow will decipher this information and pass the instructions to the RIP for output.

## XiFlow System

A complete XiFlow Workflow Solution is comprised of at least three elements: a Navigator or other Harlequin 6.0\* RIP, a XiFlow Server and the XiFlow client software. The XiFlow server is a standalone PC or integrated PC with a RIP that controls all the communication of jobs from the prepress operators to the RIP. The XiFlow Client software is run on each prepress operator's workstation and is used to create or edit workflows and manage jobs.

XiFlow supports up to 3 RIPS and up to 10 simultaneous client connections. The XiFlow Server and RIPS are Windows-based, while the Client software is available for Windows 2000 Pro, Windows 2000 Server, XP Professional, Macintosh OS 9.2 and Macintosh OS X (10.2).

XiFlow offers Navigator and other Harlequin-based RIP users a modular approach to workflow. Design your own workflow solution by purchasing the features and capabilities that meet your business needs. As these needs expand, add optional modules and support without having to invest in an entirely new system.

Contact your Xitron Dealer for more information.