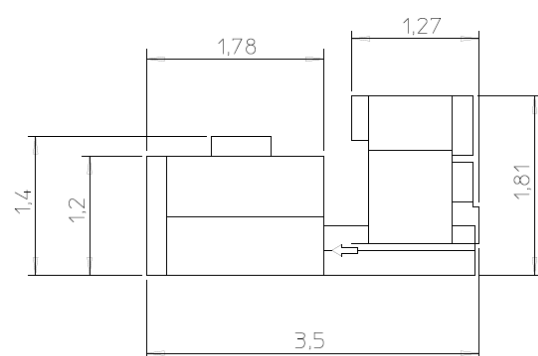
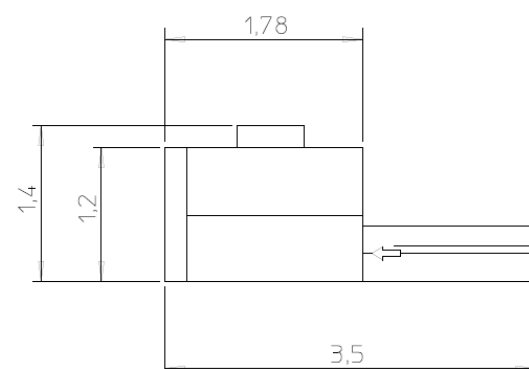


TECHNICAL DATA	MAGNUM 75
Signature Size max.	440 x 615 mm.
min.	80 x 100 mm.
Mechanical speed max.	75 cycles/min.
Openings (AUTOMATIC)	4 above, 4 below
Stitches number	14
Stitches lenght	24 - 32 mm.
Electrical	380V. trifase + N
Rated power: SEMIAUTOMATIC	2,5 Kw
AUTOMATIC	3,5 Kw
Air consumption (Automatic version)	200 NI/min. 6bar
Weight (SEMIAUTOMATIC)	2150 Kg.
Weight (AUTOMATIC)	3400 Kg.

## MAGNUM 75



**MAGNUM 75 AUTOMATIC**



**MAGNUM 75 SEMIAUTOMATIC**



## SPECIAL BOOK SEWER

## SMYTH MAGNUM 75

**Smyth s.r.l.** Regione Formica 10 S.S.31 Casale-Torino, 15030 Coniolo (AL) Italy

P. IVA - C.F. 01569250069

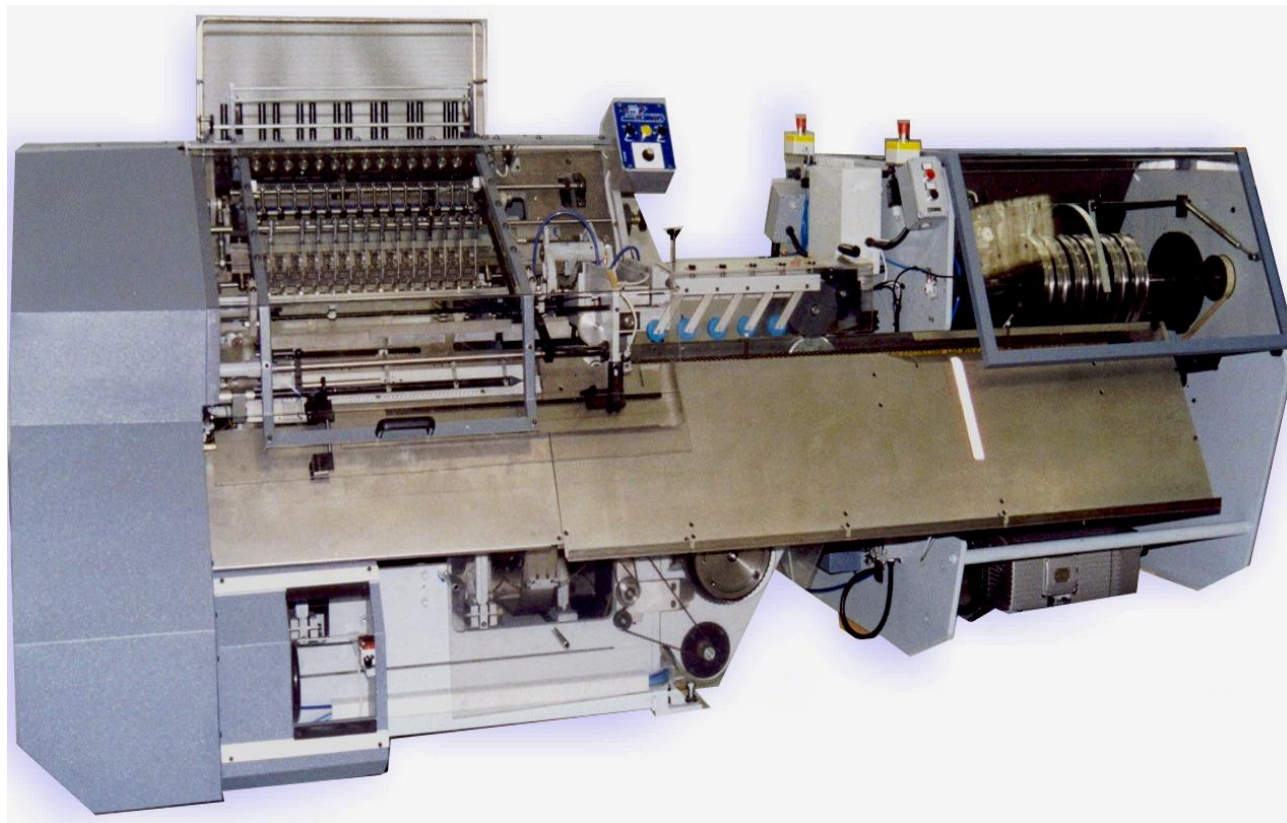
tel.: 0142-56.33.66 fax: 0142-56.22.77 e-mail: [freccia@smyth.it](mailto:freccia@smyth.it) sito web: [www.smyth.it](http://www.smyth.it)





## SPECIAL SMYTH MAGNUM 75

Thanking its capacity the MAGNUM 75 is able to sewn exceptionally large signature. It is more appreciated from the graphic company specialized in the "OVER SIZE" quality books production. The machine could be supply in SEMIAUTOMATIC version (hand feeding) and AUTOMATIC.

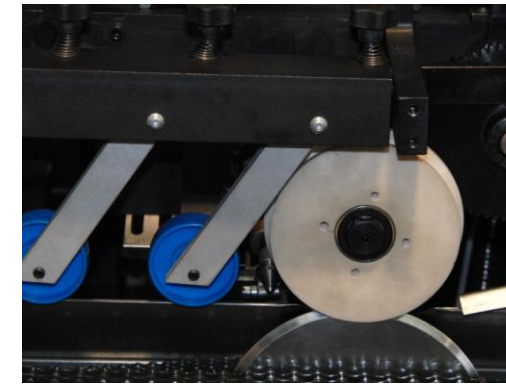


*Book Sewer MAGNUM 75 Automatic feeding*

**The Automatic Feeding sewer**, is equipped with an automatic feeder complete of 4 above openings + 4 below and the Mechanical book programmer. Furthermore the sewing machine is able to sewn signature having overlap (min. size 10 mm.) **from the same side.**

As optional the automatic feeder can be supplied complete of the LAP OPENER DEVICE (OPTIONAL) **to open overlap signature in both side.**

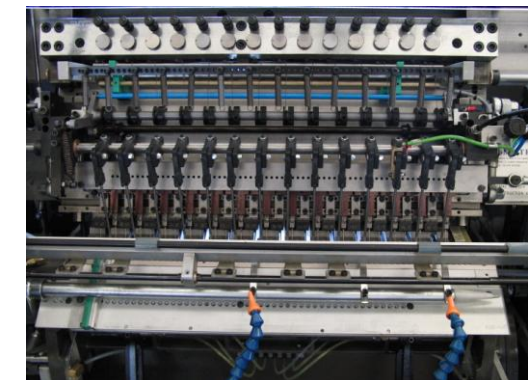
**The mobile saddle** is equipped with a precise signature locking system that lets the perfect positioning of the signature on the top of the saddle and warrants the perfect centering of the sewing stitches



**Reforming system** for the signatures back. This system consists of a lower and upper wheel, it warrants the complete opening of the signature back for the perfect sewing stitches centering

### Setting positioning Stitches

To obtain a precise stitches positioning on the signature spine, the sewer MAGNUM75 gives the possibility to set the position and the stitch length. This technical solution give the possibility to sewn the signature setting the stitches length of 24 or 32 mm.



*Cucitrice MAGNUM 75 Semiautomatic feeding*

